

ADDENDUM NO. 1
to
PLANS and SPECIFICATIONS
for

Medina River Sewer Outfall, Segment 4
SAWS Job No. 12-2504



Issue Date: November 14, 2011

**SAN ANTONIO WATER SYSTEM
MEDINA RIVER SEWER OUTFALL, SEGMENT 4
SAWS PROJECT # 12-2504
ADDENDUM NO. 1**

November 14, 2011

This addendum, applicable to the project noted above, is an amendment to the bidding and specification documents and as such shall be a part of and included in the Contract. Acknowledge receipt of this addendum by entering the addendum number and issue date in the spaces provided on all submitted copies of the proposal.

1.0 Addendum Purpose

The purpose of this addendum is to issue revisions and clarifications for the Medina River Sewer Outfall (MRSO), Segment 4 (SAWS Job No. 12-2504).

2.0 Clarifications

A. The non-mandatory site visit will be held at **1:30 on November 21, 2011**. This site visit will be held after the mandatory pre-bid meeting.

3.0 Specifications and Contract Documents

A. Table of Contents, add the Bid Proposal Checklist before the Bid Proposal. Attached is the Bid Proposal Checklist.

B. Supplementary Conditions, Instruction to Respondents, page IR-4, #9, remove the following: "In all cases, the written unit price in the bid shall govern." All other language in #9 will remain.

C. Supplementary Conditions, Page GC 19 – Delete paragraph 5.7.1.1.5 and replace with the following: "An Umbrella Liability (UL) insurance in the amount of \$5,000,000.00. This policy shall be of an "Occurrence" type and the limit of liability shall be concurrent with and in excess of the EL and AL insurance coverage described in paragraphs 5.7.1.2, 5.7.1.3, and 5.7.1.4 of this contract. Specifically state which coverage form is being used for the Excess/Umbrella Liability insurance – please include whether the coverage form is Excess or Umbrella in the Description of Operations on the Certificate of Insurance."

4.0 Plans

A. Drawing No. C-74, Sheet No. 15 – A 100' Sanitary Sewer Construction Work Limits has been added to plans. Remove and Replace this sheet with the attached plan sheet.

B. Drawing No. C-75, Sheet No. 16 – A 100' Sanitary Sewer Construction Work Limits has been added to plans. Remove and Replace this sheet with the attached plan sheet.

C. Drawing No. C-76, Sheet No. 17 – A 100' Sanitary Sewer Construction Work Limits has been added to plans. Remove and Replace this sheet with the attached plan sheet

5.0 Questions Received to Date

- A. Question: How long is the project anticipated to go on?

Answer: See the Construction Documents BP-8, Work shall be completed in full within 540 consecutive calendar days.

- B. Question: What Tree Protection entails (item #40 – whether tree trimming, fertilizing, pesticide application, etc.) and how much area of land OR how many trees are we talking about?

Answer: See Drawing No T-01, T-12 to T-15, T-21 to T-23 for notes and details on tree protection.

- C. Question: Is the new pipe going into an existing pipe line? If so, will the flow be diverted during construction of the new line?

Answer: It will be connected to Segment 3 downstream and Segment 5 upstream. Whichever contractor gets there last will make connection. See the Connection Details on Drawing No. D-02, Sheet 58. Pipe will also connect to existing lift stations and will not accept flow until pipe is accepted. No flows will be diverted during construction..

- D. Question: Is there any SWPPP plans for this project?

Answer: It will be issued in the next addendum.

Addendum No. 1
Medina River Sewer Outfall, Segment 4
Saws Project # 12-2504
November 14, 2011

ACKNOWLEDGEMENT BY BIDDER

Each bidder is requested to acknowledge receipt of this Addendum No. 1 and the associated attachments by his/her signature affixed hereto and to file same and attach with his/her bid.

The undersigned acknowledges receipt of this Addendum No. 1 along with the bid submitted herewith is in accordance with the information and stipulations set forth.

Date

Signature

END OF ADDENDUM NO. 1

P:\X2319\500\1- Documents\Phase-400-Construction Documents\Bid\2011-11-08-Addendum1.doc

ADDENDUM 1 ATTACHMENTS

SPECIFICATIONS

**Contract Documents
Table of Contents**

<u>BIDDING AND CONTRACT REQUIREMENTS</u>	<u>PAGE</u>
Invitation to Bidders	IV-1
Instructions to Bidders	IB-1
Workers' Compensation Coverage Requirements	WC-1
Bid Proposal Checklist	BC-1
Bid Proposal.....	BP-1
Proposal Certification	BP-8
Good Faith Effort Plan	GFEP
Conflict of Interest	Form CIQ
SMWB Reporting Requirements	SMWB
General Conditions of the Contract.....	GC-1
Contract Agreement	CA-1
Performance and Payment Bonds.....	PB-1
Worker's Compensation Exhibit "A"	WA-1
Contractor Bid Suspension Hearings and Appeals Policy Exhibit "B"	SP-1
Security Procedures Exhibit "C"	SP-10
Request for Taxpayer Identification Number and Certification Form.....	W-9
Instructions for Completing the ACORD Certificate of Liability Insurance	ICS
Supplementary Conditions	SS-1
Special Conditions.....	SC-1
Attachment A – Statement of Bidder's Experience	SCA-1
Attachment B – Geotechnical Data Report (R-K).....	SCB-1
Attachment C – Geotechnical Baseline Report (R-K).....	SCC-1
Attachment D – Geotechnical Data Report & Geotechnical Baseline Report – Acknowledgement Form...	SCD-1
Attachment E – Escrow Bid Documents Acknowledgement Form	SCE-1

<u>SUPPLEMENTARY SPECIFICATIONS</u>	<u>PAGE</u>
Hydromulch Seeding	SS520-1
Construction Best Management Practices and Sediment and Erosion Control Measures	SS540-1
Trench Excavation Safety Protection	SS550-1
Excavation, Trenching and Backfill	SS804-1
Sanitary Sewers	SS848-1
Air and Deflection Testing (Sanitary Sewers)	SS849-1
Sanitary Sewer Structures	SS850-1
Sanitary Sewer Glass-Fiber Reinforced Polyester (FRP) Manholes	SS853-1
Boring or Tunneling and Primary Liner	SS856-1

<u>TECHNICAL SPECIFICATIONS</u>	<u>PAGE</u>
---------------------------------	-------------

DIVISION 1 – GENERAL REQUIREMENTS

Summary of Work	01010-1
Measurement and Payment	01025-1
Field Engineering	01050-1
Disputes Review Board	01120-1
Escrow Bid Documents	01130-1
Project Meetings	01200-1
Contractor Submittals	01300-1
Construction Schedule	01310-1
Quality Control - General	01400-1
Construction Facilities and Temporary Controls	01500-1
Project Record Documents	01720-1

DIVISION 2 – SITE WORK

Site Clearing	02110-1
Tree Protection	02112-1
Site Preparation	02200-1
HDPE (Air Bypass Pipe)	02731-1

DIVISION 3 - CONCRETE

Concrete Formwork	03100-1
-------------------------	---------

Concrete Reinforcement	03200-1
Cast-in-Place Concrete	03300-1
Grout.....	03600-1

DIVISION 5 – METALS

Miscellaneous Metal Fabrications	05500-1
Anchor Bolts, Expansion Anchors and Concrete Inserts.....	05501-1
Grating and Floor Plates	05530-1

DIVISION 9 – FINISHES

Painting	09900-1
----------------	---------

DIVISION 15 – MECHANICAL

Sluice Gates	15112-1
Stop Log Frames	15113-1

(Separate Documents)

CoSA Standard Specifications for Public Works Construction (Latest Edition)

SAWS Specifications for Water and Sanitary Sewer Construction (Latest Edition)

TxDOT Standard Specifications for Construction and Maintenance of Highways, Streets, and Bridges
(Latest Edition)

BID PROPOSAL CHECKLIST:
Medina River Sewer Outfall – Segment 4 Project
SAWS Job No. 12-2504
Solicitation No. B-11-029-DD

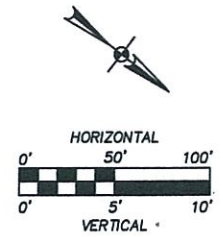
Mandatory items to be submitted with the Bid Packet for the above-referenced project:

- Bid proposal
- Bid Proposal Certification
- Bid Bond
- Signed page(s) of Addendum(s)
- Good Faith Effort Plan
- Conflict of Interest Questionnaire (Form CIQ)
- Signed W-9
- Letter of Insurance Verification and/or sample Certificate of Insurance verifying insurance coverage
- Financial Statement prepared within the last twelve months by an independent Certified Public Accountant (per Supplementary Conditions, page SS-1)
- Company Information Packet (per Supplementary Conditions, page SS-1)
- Prepared statement regarding ability to complete project (per Supplementary Conditions, page SS-1)
- Statement of Bidder's Experience (Attachment A)/Record of Performance on three (3) similar projects in the last five (5) years (per Supplementary Conditions, page SS-1)
- Attachment D – Geotechnical Data Report and Geotechnical Baseline Report Acknowledgement Form
- Attachment E – Escrow Bid Documents Acknowledgement Form

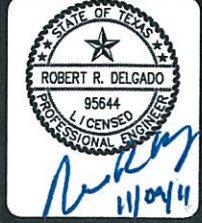
PLANS

TRENCH EXCAVATION SAFETY PROTECTION

CONTRACTOR AND/OR CONTRACTOR'S INDEPENDENTLY RETAINED EMPLOYEE OR STRUCTURAL DESIGN/ GEOTECHNICAL/ SAFETY/ EQUIPMENT CONSULTANT, IF ANY, SHALL REVIEW THESE PLANS AND ANY AVAILABLE GEOTECHNICAL INFORMATION AND THE ANTICIPATED INSTALLATION SITES WITHIN THE PROJECT WORK AREA IN ORDER TO IMPLEMENT CONTRACTOR'S TRENCH EXCAVATION SAFETY PROTECTION SYSTEMS, PROGRAMS AND/OR PROCEDURES FOR THE PROJECT DESCRIBED IN THE CONTRACT DOCUMENTS. THE CONTRACTOR'S IMPLEMENTATION OF THESE SYSTEMS, PROGRAMS AND/OR PROCEDURES SHALL PROVIDE FOR ADEQUATE TRENCH EXCAVATION SAFETY PROTECTION THAT COMPLY WITH AS A MINIMUM, OSHA STANDARDS FOR TRENCH EXCAVATIONS. SPECIFICALLY, CONTRACTOR AND/OR CONTRACTOR'S INDEPENDENTLY RETAINED EMPLOYEE OR SAFETY CONSULTANT SHALL IMPLEMENT A TRENCH SAFETY PROGRAM IN ACCORDANCE WITH OSHA STANDARDS GOVERNING THE PRESENCE AND ACTIVITIES OF INDIVIDUALS WORKING IN AND AROUND TRENCH EXCAVATION.



NO.	DATE	REVISION	ANGLE	WORK LIMITS
1	10.17			
2	11.9			



PAPE-DAWSON ENGINEERS

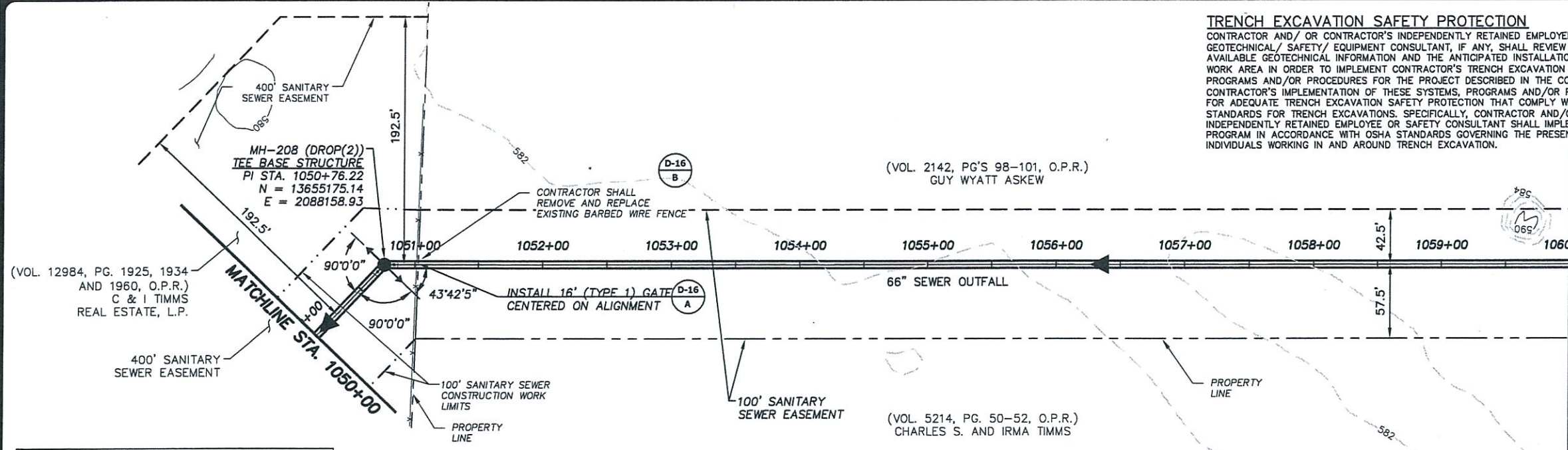
M.W. CUDE ENGINEERS, L.L.C.
 10025 SAN ANTONIO ROAD
 SAN ANTONIO, TEXAS 78250
 TEL 210.681.2951 • FAX 210.633.7112
 WWW.AMYCUDE.COM
 IPE REGISTERED ENGINEERING FIRM # 655

CUDE ENGINEERS SURVEYORS PLANNERS

SAN ANTONIO WATER SYSTEM
 MEDINA RIVER SEWER OUTFALL PROJECT
 SAWS JOB NO. 12-2504

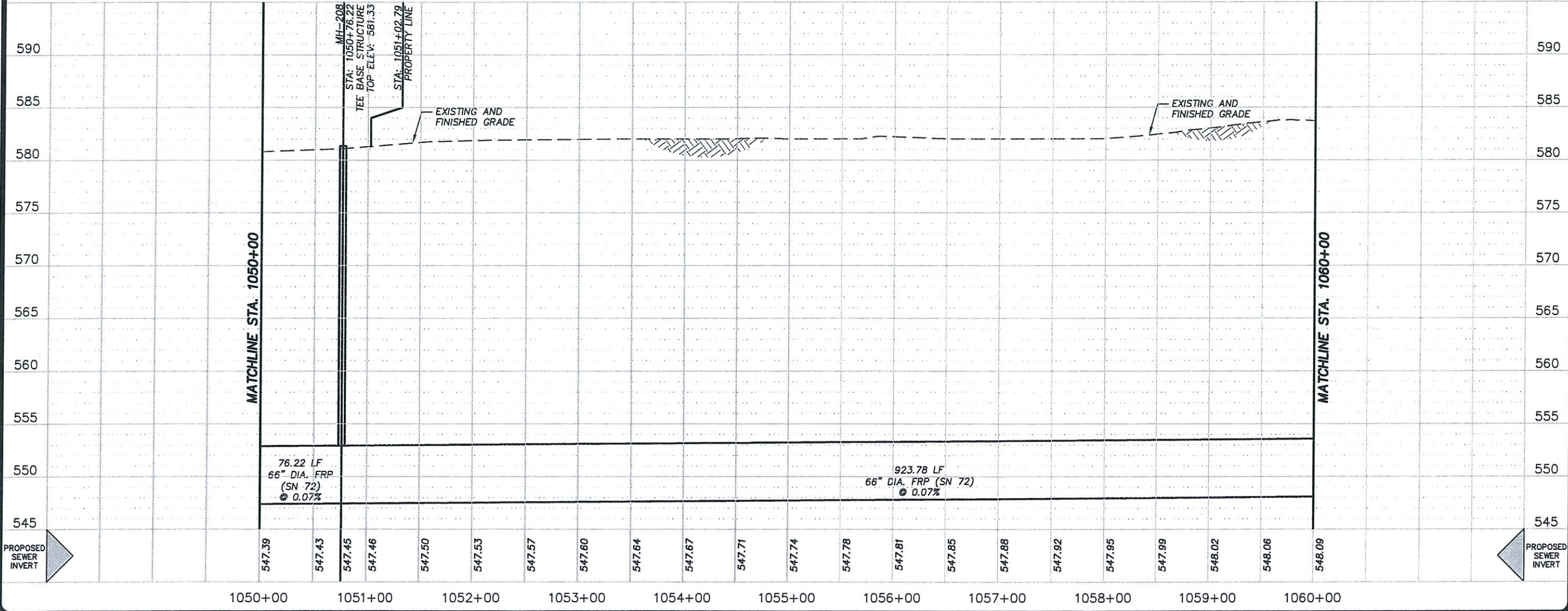
PLAN AND PROFILE SHEET
 STA. 1050+00 TO STA. 1060+00

JOB NO.	6866-00
DATE	FEBRUARY 2010
DESIGNER	RRD
DRAWN	BMO
CHECKED	IJC
DRAWING No.	C-76
SHEET No.	17



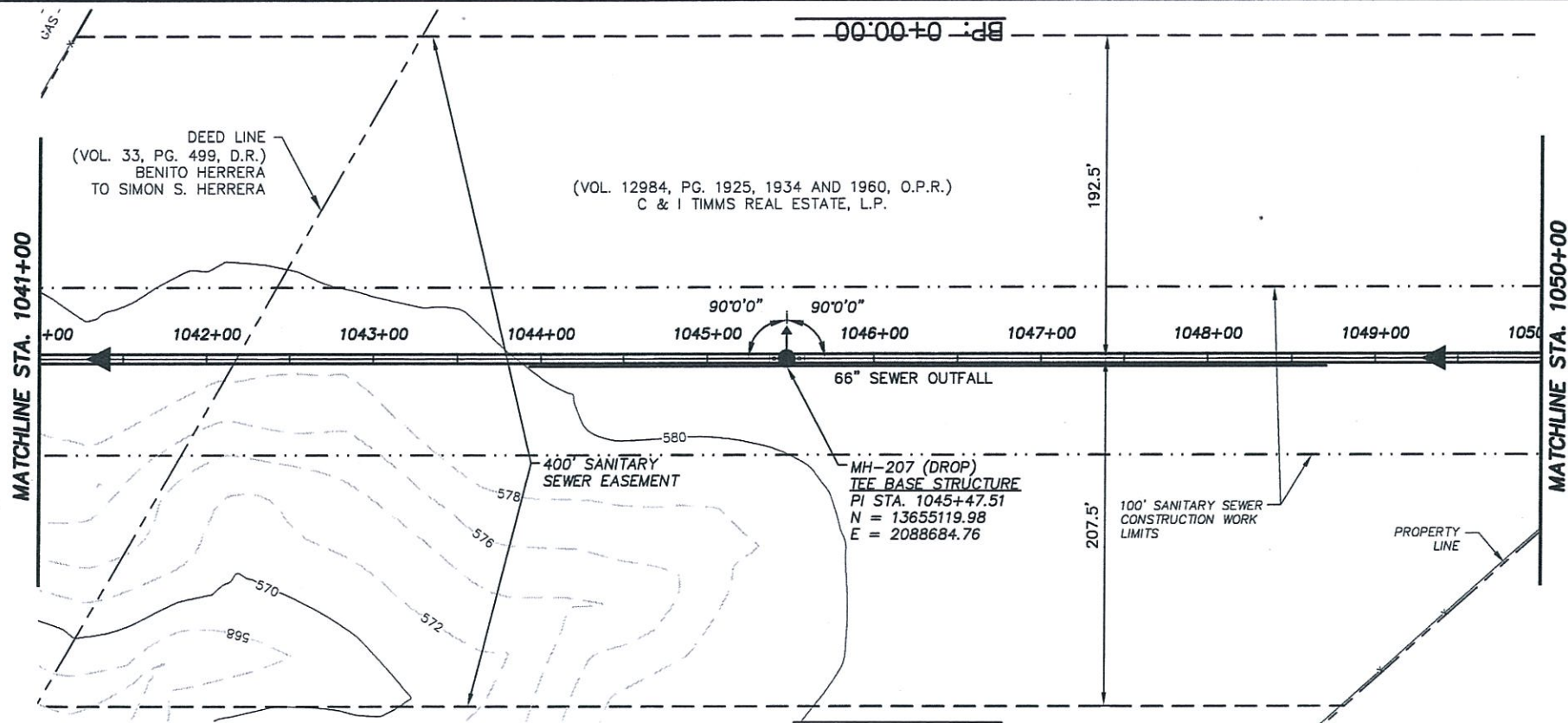
CAUTION!!!
 CONTRACTOR TO EXERCISE EXTREME CAUTION WHEN WORKING UNDER AND / OR AROUND OVERHEAD ELECTRIC LINES. CONTRACTOR SHALL COORDINATE WITH CPS ENERGY TO ESTABLISH THE MAXIMUM WORKING HEIGHT FROM GROUND ELEVATION. COORDINATE ALL WORK WITH CPS ENERGY.

- NOTES:**
1. WORK ZONE SHALL BE LIMITED TO THE EASEMENT(S) SHOWN.
 2. REFER TO DWG. NO. G-02 FOR ALL GENERAL UTILITY NOTES AND CONTACT INFORMATION.
 3. THE LOCATIONS AND DEPTHS OF EXISTING UTILITIES AND DRAINAGE STRUCTURES SHOWN ON THESE PLANS ARE APPROXIMATE. THE CONTRACTOR SHALL VERIFY ACTUAL LOCATIONS AND DEPTHS OF ALL UNDERGROUND UTILITIES AND DRAINAGE STRUCTURES PRIOR TO EXCAVATION AND INSTALLATION. IT IS THE CONTRACTOR'S RESPONSIBILITY TO LOCATE ALL UTILITIES AND DRAINAGE STRUCTURES WHETHER SHOWN ON THE PLANS OR NOT AND TO PROTECT ALL UTILITIES AND DRAINAGE STRUCTURES DURING CONSTRUCTION.
 4. CONTRACTOR IS RESPONSIBLE FOR LOCATING AND REPAIRING ANY UTILITIES DAMAGED DURING CONSTRUCTION AT NO ADDITIONAL COST TO SAWS.

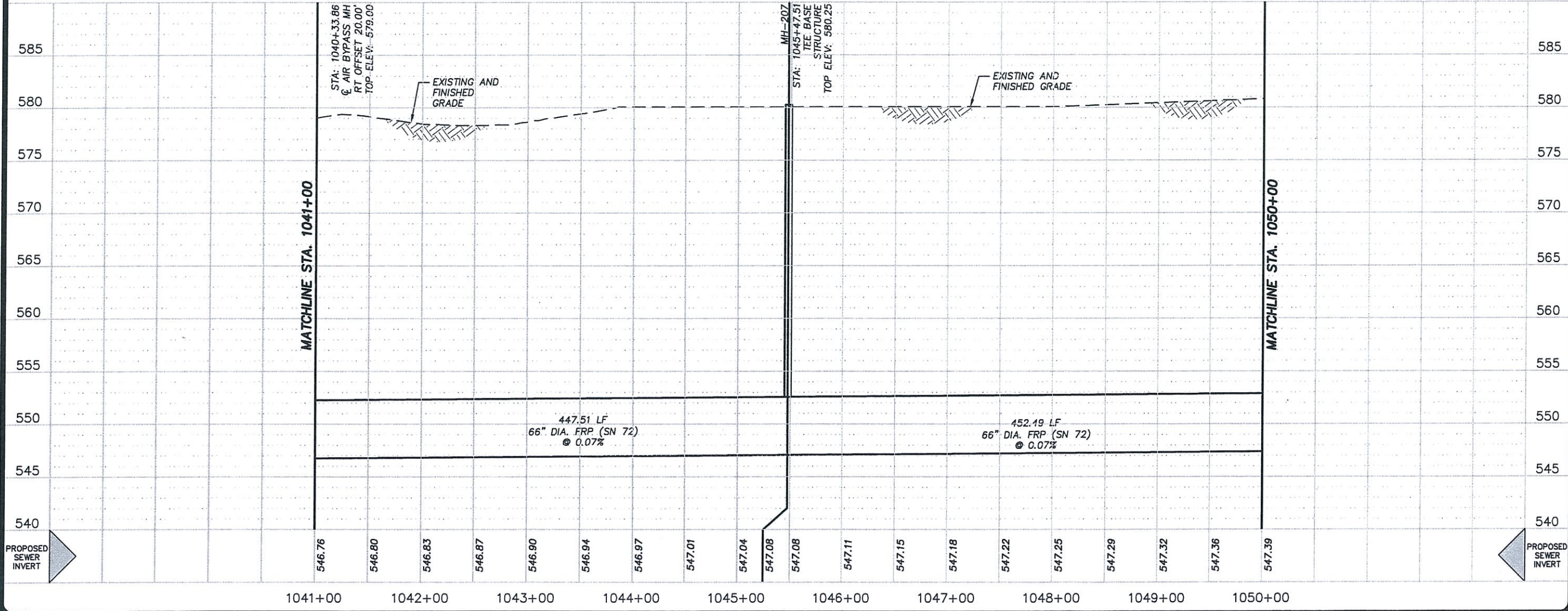


CAUTION!!!
 CONTRACTOR TO EXERCISE EXTREME CAUTION WHEN WORKING UNDER AND / OR AROUND OVERHEAD ELECTRIC LINES. CONTRACTOR SHALL COORDINATE WITH CPS ENERGY TO ESTABLISH THE MAXIMUM WORKING HEIGHT FROM GROUND ELEVATION. COORDINATE ALL WORK WITH CPS ENERGY.

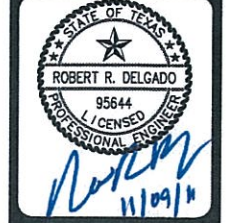
TRENCH EXCAVATION SAFETY PROTECTION
 CONTRACTOR AND/ OR CONTRACTOR'S INDEPENDENTLY RETAINED EMPLOYEE OR STRUCTURAL DESIGN/ GEOTECHNICAL/ SAFETY/ EQUIPMENT CONSULTANT, IF ANY, SHALL REVIEW THESE PLANS AND ANY AVAILABLE GEOTECHNICAL INFORMATION AND THE ANTICIPATED INSTALLATION SITES WITHIN THE PROJECT WORK AREA IN ORDER TO IMPLEMENT CONTRACTOR'S TRENCH EXCAVATION SAFETY PROTECTION SYSTEMS, PROGRAMS AND/OR PROCEDURES FOR THE PROJECT DESCRIBED IN THE CONTRACT DOCUMENTS. THE CONTRACTOR'S IMPLEMENTATION OF THESE SYSTEMS, PROGRAMS AND/OR PROCEDURES SHALL PROVIDE FOR ADEQUATE TRENCH EXCAVATION SAFETY PROTECTION THAT COMPLY WITH AS A MINIMUM, OSHA STANDARDS FOR TRENCH EXCAVATIONS. SPECIFICALLY, CONTRACTOR AND/OR CONTRACTOR'S INDEPENDENTLY RETAINED EMPLOYEE OR SAFETY CONSULTANT SHALL IMPLEMENT A TRENCH SAFETY PROGRAM IN ACCORDANCE WITH OSHA STANDARDS GOVERNING THE PRESENCE AND ACTIVITIES OF INDIVIDUALS WORKING IN AND AROUND TRENCH EXCAVATION.



- NOTES:**
1. WORK ZONE SHALL BE LIMITED TO THE EASEMENT(S) SHOWN.
 2. REFER TO DWG. NO. G-02 FOR ALL GENERAL UTILITY NOTES AND CONTACT INFORMATION.
 3. THE LOCATIONS AND DEPTHS OF EXISTING UTILITIES AND DRAINAGE STRUCTURES SHOWN ON THESE PLANS ARE APPROXIMATE. THE CONTRACTOR SHALL VERIFY ACTUAL LOCATIONS AND DEPTHS OF ALL UNDERGROUND UTILITIES AND DRAINAGE STRUCTURES PRIOR TO EXCAVATION AND INSTALLATION. IT IS THE CONTRACTOR'S RESPONSIBILITY TO LOCATE ALL UTILITIES AND DRAINAGE STRUCTURES WHETHER SHOWN ON THE PLANS OR NOT AND TO PROTECT ALL UTILITIES AND DRAINAGE STRUCTURES DURING CONSTRUCTION.
 4. CONTRACTOR IS RESPONSIBLE FOR LOCATING AND REPAIRING ANY UTILITIES DAMAGED DURING CONSTRUCTION AT NO ADDITIONAL COST TO SAWS.



NO.	DATE	REVISION	WORK LIMITS
1	11.9		



PAPE-DAWSON ENGINEERS
 M.W. CUDE ENGINEERS, L.L.C.
 CUDE ENGINEERS, L.L.C.
 SAN ANTONIO, TEXAS 78209
 TEL 210.681.2951 • FAX 210.523.7112
 WWW.AMVCUDE.COM
 TYPE REGISTERED ENGINEERING FIRM # 658

SAN ANTONIO WATER SYSTEM
MEDINA RIVER SEWER OUTFALL PROJECT
 SAWS JOB NO. 12-2504

PLAN AND PROFILE SHEET
STA. 1041+00 TO STA. 1050+00

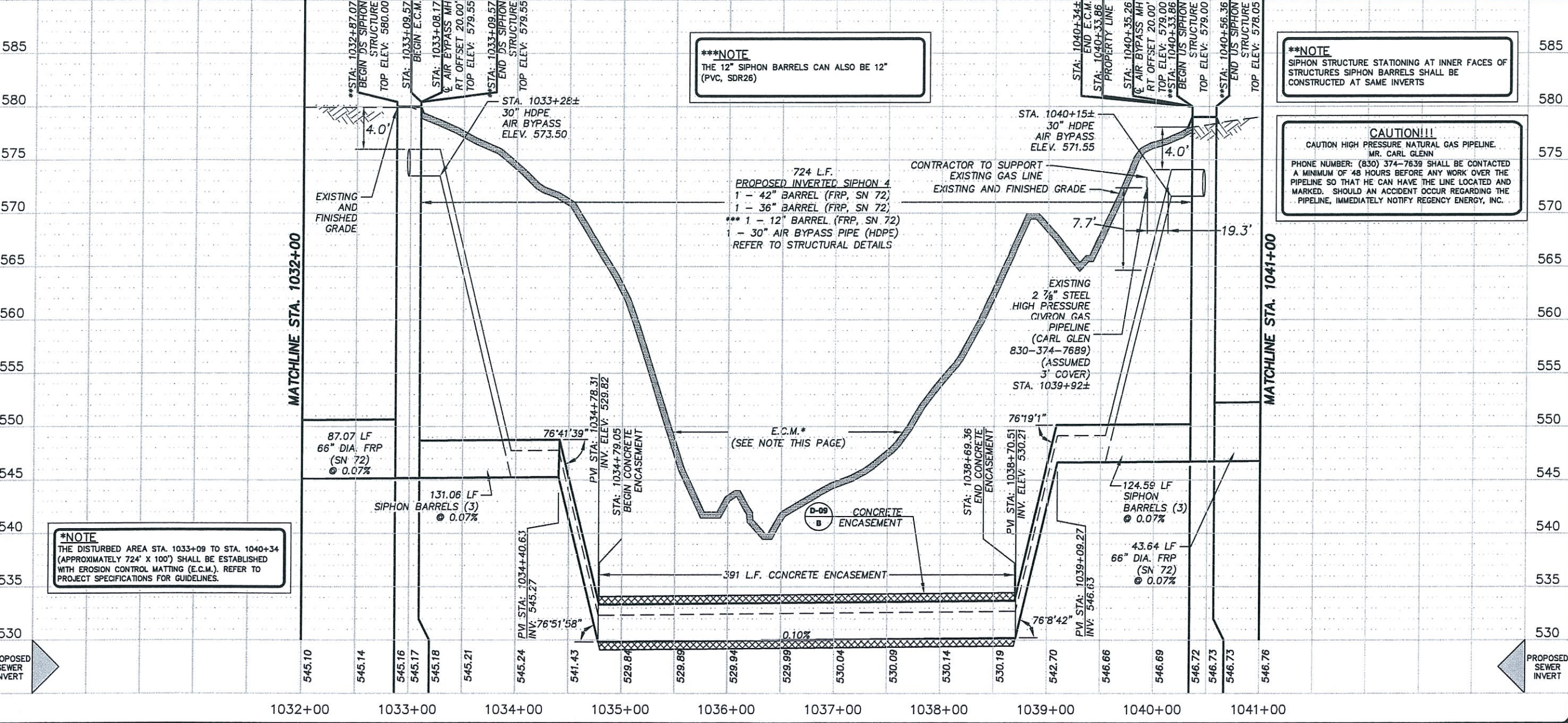
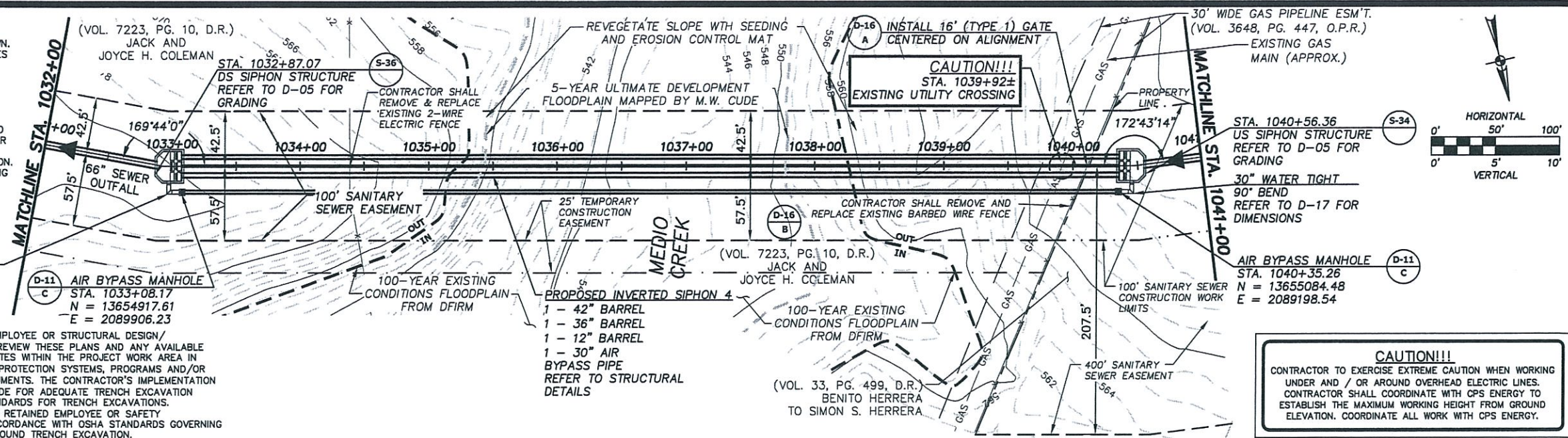
JOB NO.	6866-00
DATE	FEBRUARY 2010
DESIGNER	RRD
DRAWN	BMO
CHECKED	IJC
DRAWING No.	C-75
SHEET No.	16

NOTES:

1. WORK ZONE SHALL BE LIMITED TO THE EASEMENT(S) SHOWN. REFER TO DWG. NO. G-02 FOR ALL GENERAL UTILITY NOTES AND CONTACT INFORMATION.
2. THE LOCATIONS AND DEPTHS OF EXISTING UTILITIES AND DRAINAGE STRUCTURES SHOWN ON THESE PLANS ARE APPROXIMATE. THE CONTRACTOR SHALL VERIFY ACTUAL LOCATIONS AND DEPTHS OF ALL UNDERGROUND UTILITIES AND DRAINAGE STRUCTURES PRIOR TO EXCAVATION AND INSTALLATION. IT IS THE CONTRACTOR'S RESPONSIBILITY TO LOCATE ALL UTILITIES AND DRAINAGE STRUCTURES WHETHER SHOWN ON THE PLANS OR NOT AND TO PROTECT ALL UTILITIES AND DRAINAGE STRUCTURES DURING CONSTRUCTION. CONTRACTOR IS RESPONSIBLE FOR LOCATING AND REPAIRING ANY UTILITIES DAMAGED DURING CONSTRUCTION AT NO ADDITIONAL COST TO SAWS.

TRENCH EXCAVATION SAFETY PROTECTION

CONTRACTOR AND/OR CONTRACTOR'S INDEPENDENTLY RETAINED EMPLOYEE OR STRUCTURAL DESIGN/ GEOTECHNICAL/ SAFETY/ EQUIPMENT CONSULTANT, IF ANY, SHALL REVIEW THESE PLANS AND ANY AVAILABLE GEOTECHNICAL INFORMATION AND THE ANTICIPATED INSTALLATION SITES WITHIN THE PROJECT WORK AREA IN ORDER TO IMPLEMENT CONTRACTOR'S TRENCH EXCAVATION SAFETY PROTECTION SYSTEMS, PROGRAMS AND/OR PROCEDURES FOR THE PROJECT DESCRIBED IN THE CONTRACT DOCUMENTS. THE CONTRACTOR'S IMPLEMENTATION OF THESE SYSTEMS, PROGRAMS AND/OR PROCEDURES SHALL PROVIDE FOR ADEQUATE TRENCH EXCAVATION SAFETY PROTECTION THAT COMPLY WITH AS A MINIMUM, OSHA STANDARDS FOR TRENCH EXCAVATIONS. SPECIFICALLY, CONTRACTOR AND/OR CONTRACTOR'S INDEPENDENTLY RETAINED EMPLOYEE OR SAFETY CONSULTANT SHALL IMPLEMENT A TRENCH SAFETY PROGRAM IN ACCORDANCE WITH OSHA STANDARDS GOVERNING THE PRESENCE AND ACTIVITIES OF INDIVIDUALS WORKING IN AND AROUND TRENCH EXCAVATION.



APP NO. DATE REVISION PROFILE WORK LIMITS

1	10.17		
2	11.9		

STATE OF TEXAS
 ROBERT R. DELGADO
 95644
 PROFESSIONAL ENGINEER

CAUTION!!!
 CONTRACTOR TO EXERCISE EXTREME CAUTION WHEN WORKING UNDER AND / OR AROUND OVERHEAD ELECTRIC LINES. CONTRACTOR SHALL COORDINATE WITH CPS ENERGY TO ESTABLISH THE MAXIMUM WORKING HEIGHT FROM GROUND ELEVATION. COORDINATE ALL WORK WITH CPS ENERGY.

M.W. CUDE ENGINEERS, L.L.C.
 SAN ANTONIO, TEXAS 78209
 TEL: 210.481.2911 • FAX: 210.532.7112
 WWW.AMVICUDE.COM
 TYPE REGISTERED ENGINEERING FIRM #453

PAPE-DAWSON ENGINEERS

CUDE ENGINEERS

SAN ANTONIO WATER SYSTEM
 MEDINA RIVER SEWER OUTFALL PROJECT
 SAWS JOB NO. 12-2504

PLAN AND PROFILE SHEET
 STA. 1032+00 TO STA. 1041+00

JOB NO. 6866-00
 DATE FEBRUARY 2010
 DESIGNER RRD
 DRAWN BMO
 CHECKED JUC
 DRAWING No. C-74
 SHEET No. 15